



8.

Râușor

Râușor – Suseni – Râu de Mori – Brazi – Clopotiva – Sarmisegetusa



Approximate time: 1-2 hours

Distance: 21,3 km

Altitude difference: approx. 80 m (if you came from Sarmizegetusa to Râușor the level difference will be for approx. 600 m)

Surface: asphalt road, gravel road;

Difficulty level: difficult if you go in reverse;

Problems:

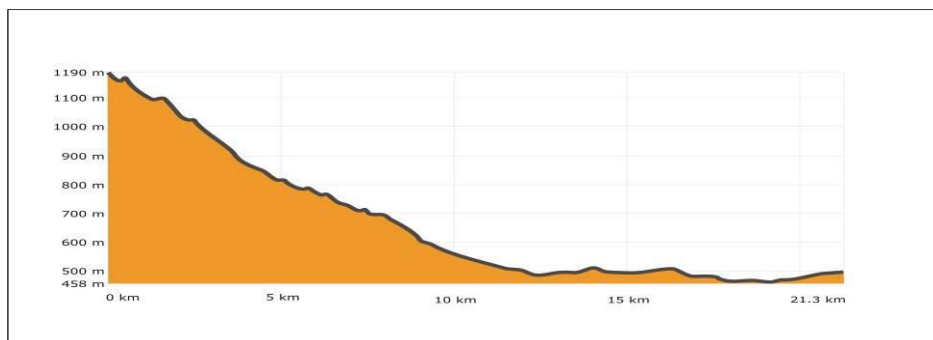
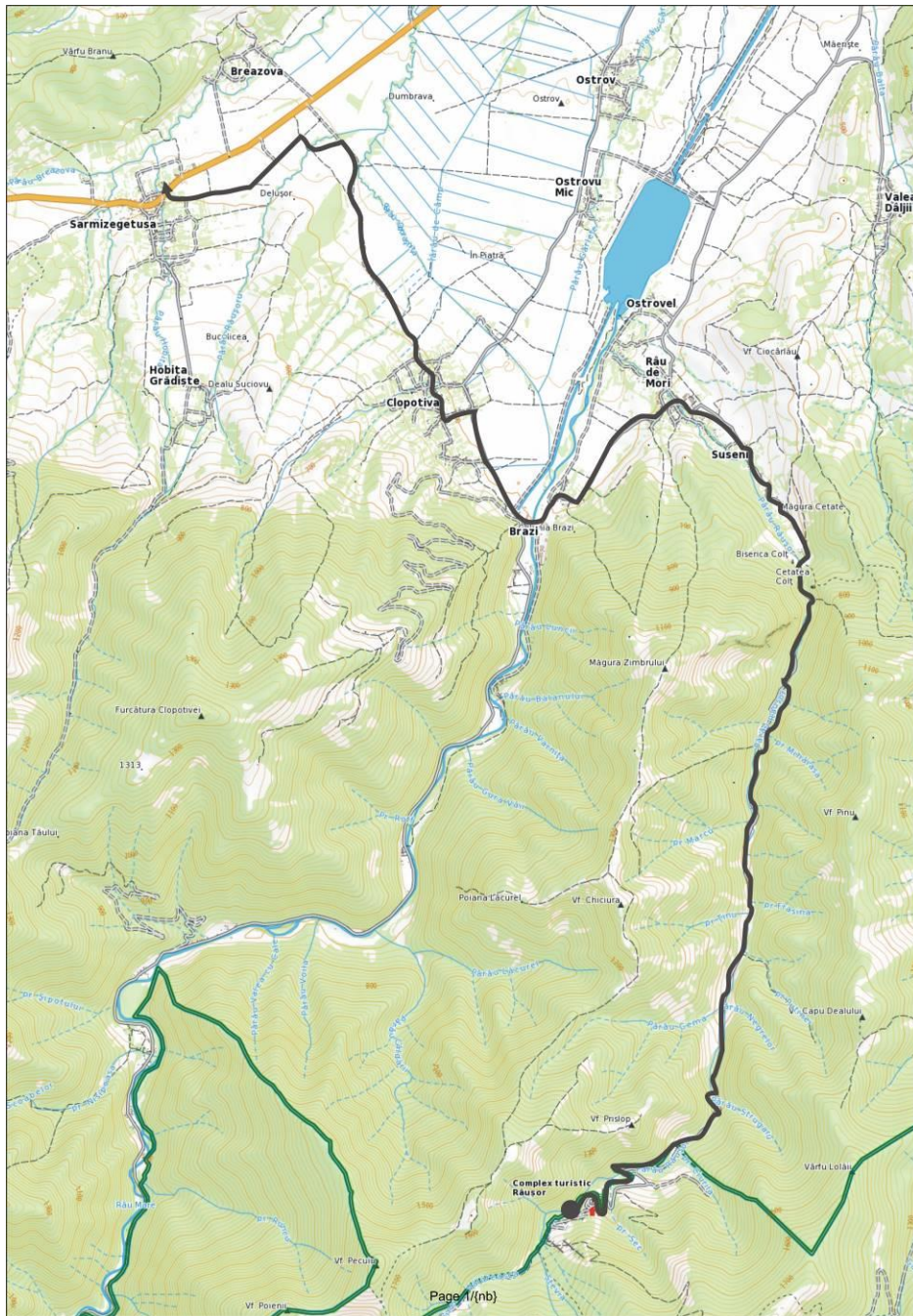
- The traffic;
- Increased attention to curves, especially if you do not have visibility.

Unique features:

- You can visit Colț Monastery and Colț Fortress;
- It passes through the center of archaeological site from Sarmizegetusa;
- It is mainly a descending trail.

The route starts in Râușor and follows the asphalt road on Râușor Valley down to Suseni village. When you enter the village you can see on the left Colț Monastery and on the hill top on the right there are the ruins of Colț Fortress. From here you continue to Râu de Mori village where at the crossroads from the centre you turn left to Brazi. In Brazi, after crossing the bridge over the Râu Mare river keep going to the right to Clopotiva and then to Sarmisegetusa.

Before reaching the national road, you have to turn left along a dirt road, which is a bit grassy. You continue on it until you get to a point where the road seems to disappear in a stream, but keep going straight ahead for about 5-10 meters through the shallow water, easily to cross on the boulders. Once you pass this section, turn left on the first road and keep going until you get to the Colony Ulpia Traiana Sarmizegetusa. You can choose to visit the ruins of the former Roman capital of Dacia, or go straight ahead until you reach the national road again.



Visit the website www.eco-romania.ro or www.turismrezezat.ro to download its GPS track.

For a better orientation in the field we recommend you to use "Țara Hațegului - Retezat" map, available in many locations at destination's level and on the web sites www.eco-romania.ro and www.zenithmaps.com