



6. Poiana Pelegii (Pelegii Clearing)

Râu de Mori – Brazi – Râului Mare Valley – Gura Apei dam (Tomeasa) – Lăpusnicului Mare Valley – Gura Bucurii – return



Approximate time: 6-7 hours

Distance: 91,6 km

Altitude difference: approx 1490 m

Surface: asphalt road, gravel road;

Difficulty level: difficult

Problems:

- Some traffic on the asphalt road section.

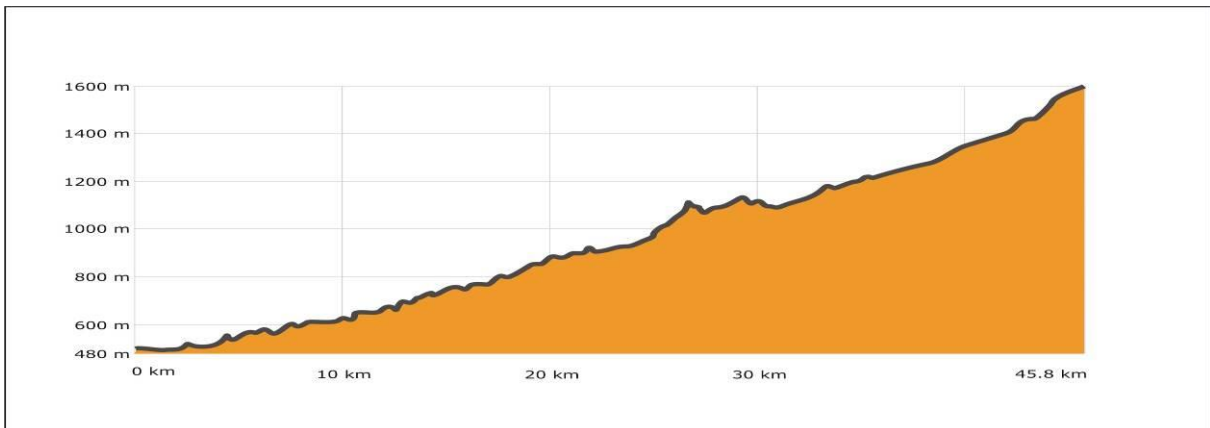
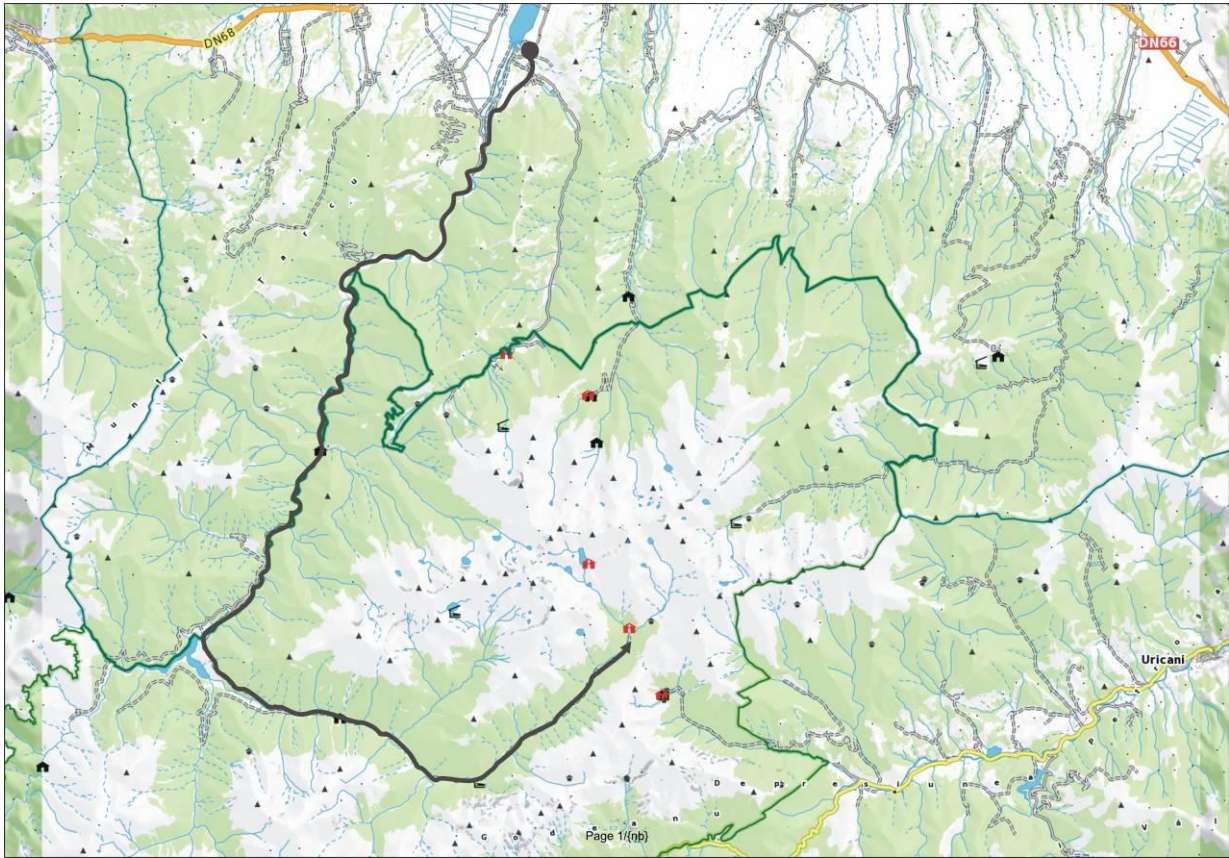
Unique feature:

- You can get to Gura Bucurii, and then, on foot, up to Poiana Pelegii;
- It is one of the fewest alternatives to get by bike so far up in the mountains.

At the crossroads from the centre of Râu de Mori commune you need to follow the road to the right to Brazi. After 3 km you reach Brazi colony, you pass by the sports centre that is on the left and at the first intersection after the bridge you turn left on Râului Mare Valley. You follow the asphalt road and after 28 km of climbing you reach the Gura Apei dam (also known as Tomeasa). From here you continue over the dam and then turn left, passing by Gura Apei entry point in Retezat National Park.

It is necessary to pay the visiting fee, valid for one week. From here up to Rotunda Hut the cycling route follows a gravel road with some damaged sections, but still in use. Please keep in mind that the hut is currently closed to the public. From the hut to Stănuleți mountain shelter the road becomes more accessible. The last part of the road becomes steeper and it ends in the place called Gura Bucurii. From here you cross the stream on foot and in 5 minutes you get in Pelegii Clearing (Poiana Pelegii).

To get back you use the same route, but in reverse.



Visit the website www.eco-romania.ro or www.turismretezat.ro to download its GPS track.

For a better orientation in the field we recommend you to use "Țara Hațegului - Retezat" map, available in many locations at destination's level and on the web sites www.eco-romania.ro and www.zenithmaps.com