



10. Stâna din Râu

Râu Bărbat – Hobița – Râu Bărbat forest road – Stâna din Râu



Approximate time: 6 hours

Distance: 51,6 km

Altitude difference: approx. 1070 m

Surface: asphalt road, gravel road;

Difficulty level: difficult;

Problems:

- The refuge is a bit hidden from your sight;
- There are many forest exploitations and in some cases the wood is pulled directly on the road; also there are many trucks on the road.

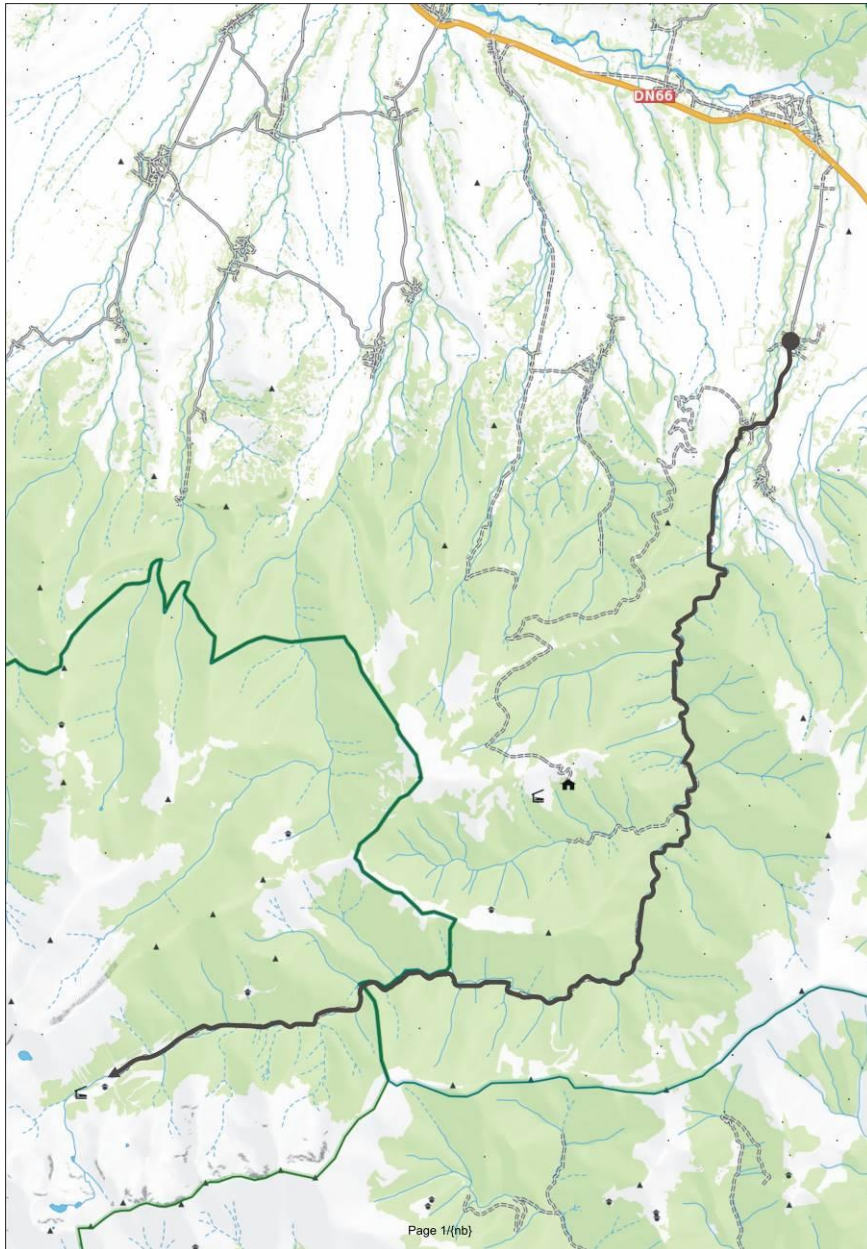
Unique features:

- It is the trail that reaches the highest altitude (1500 m)
- It gets right below Păpușa Mică Peak.

The route starts in Râu Bărbat and it goes to Hobița (you can also start it in Pui village). From here you will follow the tourist signs to Stâna din Râu. The road climbs slowly, and about two kilometres far from the village we will meet Bărbat River.

From here the road climbs along the river, on the left or on the right side up to Stâna din Râu. At the end of the road we will meet several info boards with Retezat National Park and the road continues on a wooden bridge over the river Bărbat. Right after the bridge the road becomes rough and it climbs steeply to the sheepfold and from there a little higher up on a stony plateau. To the right and down from here it is the mountain shelter Stâna din Râu.

To get back you use the same route, but in reverse.



Visit the website www.eco-romania.ro or www.turismretezat.ro to download its GPS track.

For a better orientation in the field we recommend you to use "Țara Hațegului - Retezat" map, available in many locations at destination's level and on the web sites www.eco-romania.ro and www.zenithmaps.com